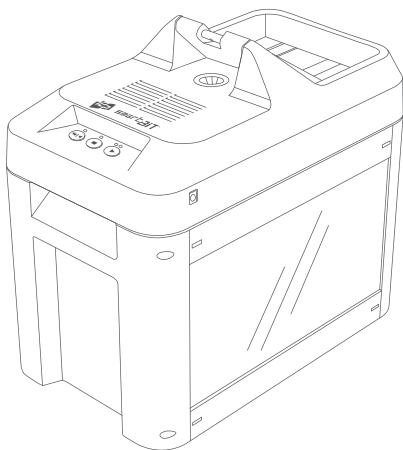


Securely Destroy Sensitive Personal Information

# smartBIT<sup>®</sup>

## USER GUIDE





## CAUTIONS

- Disconnect and unplug the power adapter BEFORE lifting the Top Body from the Waste Bin. Exposed shredder motor may cause injury or damage if the unit becomes operational while Top Body is detached from Waste Bin.
- Do NOT disassemble or modify device, this will void the warranty and may cause the unit to malfunction.
- Use only dye-sublimation ribbons from card printers with a maximum width of 90mm. Thicker ribbon like laminating film or foil is used, it may cause damage.
- Do NOT shred ribbons which are attached to the core with adhesive tape. Adhesives tape and residue may cause damage to the cutter blades.
- Replace the Dust Bag after a maximum of 6 YMCKO (250 card) ribbons. Do NOT over-fill the shredder's Dust Bag.
- **Do NOT shred ribbons over the "Full-line" presented on the Waste Bin or Dust Bag.**  
**It may cause serious damage to the cutter parts.**



- Unplug and clean the cutter periodically.
- Do NOT operate the SMART-BIT for more than 30 minutes of continuous use. (Recommended cool-down time of 5 minutes for every 30 minutes.)
- If any part of the user's body or clothing is caught, remove the appliance coupler or lift the appliance out of the Waste Bin.
  - This equipment is not intended for use by children. (The product is not a toy)
  - Avoid touching the shredding hole opening with the hands.
  - Avoid clothing touching the shredding hole opening.
  - Avoid hair touching the shredding hole opening.
  - Keep aerosol products away.



### Operator's manual

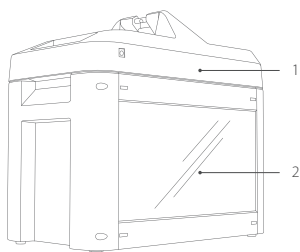
To identify the location where the operator's manual is stored or to identify information that relates to the operating instructions. To indicate that the operating instructions should be considered when operating the device or control close to where the symbol is placed.



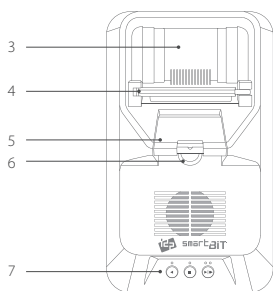
### Caution

To indicate that caution is necessary when operating the device or control close to where the symbol is placed, or to indicate that the current situation needs operator awareness or operator action in order to avoid undesirable consequences.

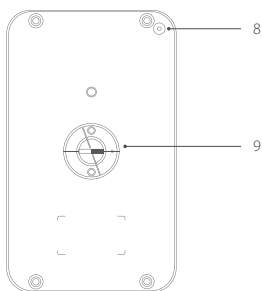
# 1. Features



1. Body (Top Body)
  2. Waste Bin
  3. Ribbon Tray
  4. Ribbon Guide
  5. Ribbon Hole Guide
  6. Shredding Hole
  7. Operation Buttons
- ☺ : Shred (Slow | Normal | Fast)  
⏹ : Stop   ⏪ : Reverse
8. Power Disconnecter
  9. Cutter Module



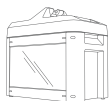
Top



Bottom

---

## Included



SMART-BIT x1



Power adaptor x1



AC Power cable x1



Dust bag x1

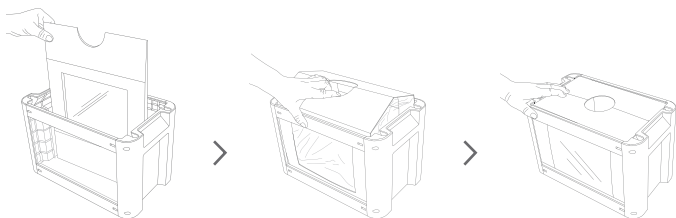


User Guide

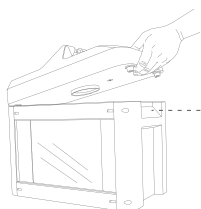


## 2. Installation

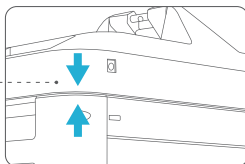
Install the dust bag for SMART-BIT that is provided in the Waste Bin.



Put the Top Body of SMART-BIT on the Waste Bin.

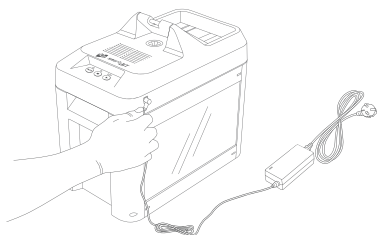


Align the rubber feet with the grooves on the Waste Bin.



Check the join fits properly.

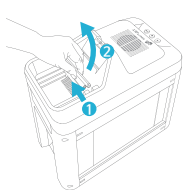
Connect the power adapter.



• Use only the power adapter supplied with the device. (Output DC 24V, 2.5A)

### 3. Preparation and operation

To prepare the ribbon for shredding, lift the Ribbon Guide, place the ribbon in the Ribbon Tray, then lower Ribbon Guide into position.



Lift up  
Ribbon Guide.



Place the end of the ribbon  
face down as a pictured.

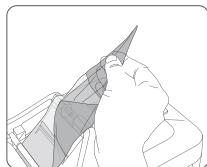


Lower  
Ribbon guide.

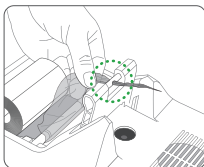


Be careful to install ribbon as pictured.

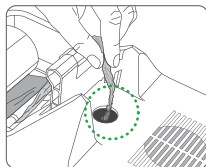
Carefully follow steps pictured below to insert ribbon into the Shredding Gate.



Fold the end of the  
ribbon to make a point.



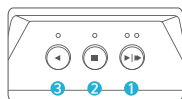
Insert the point of the ribbon  
through the Ribbon Hole  
Guide.



Insert the point of the ribbon  
into the Shredding Hole.

▶ Push the 'Shred' button to operate.

- Three operating speeds are available: Slow, Normal and Fast.
- Push ◻ 'Stop' button to stop it.
- Push ◀ 'Reverse' button to detach a remained ribbon or a jammed ribbon.



- 1 Shred (Slow ●○ | Normal ○● | Fast ●●)
- 2 Stop
- 3 Reverse



The LED blinks if an error occurs. Please refer to Section 5. Maintenance for details.

Securely Destroy Sensitive Personal Information

**smartBIT**

**IDP Corp., Ltd.**

#601, 50, Digital-ro 33-gil,  
Guro-gu, Seoul, Korea,  
08377

**T** +82-2-6099-3700

**F** +82-2-6099-3717

**E** sales@idp-corp.com

**IDP Americas, Inc.**

1485 S County Trail, Unit 306  
East Greenwich, RI 02818  
U.S.A.

**T** +1-401-400-7111

**F** +1-401-667-7445

**E** sales@idpamericas.com

**IDP Middle East**

LOB18 Office#1203, JAFZA  
VIEW 18, Jebel Ali extension,  
Dubai U.A.E.

**T** +971-4-546-8111

**E** mea@idp-corp.com

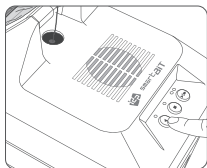


615059

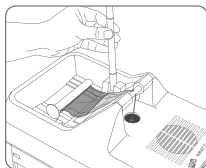


## 4. Detach / Remove Ribbon

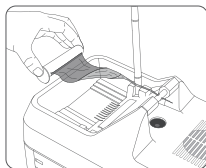
When shredding is complete, SMART-BIT will stop automatically and the LED blink. The ribbon to be shredded can be detached and removed using the following steps.



Push ◀ 'Reverse' button  
Push ▶ 'Stop' button to detach a ribbon from the Shredding Gate.



Lift up the Ribbon Guide.



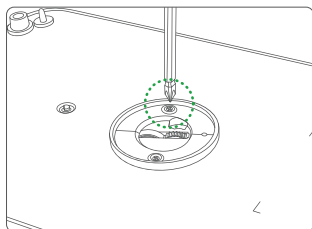
Take out the ribbon core and dispose of as recommended by the printer manufacturer.

---

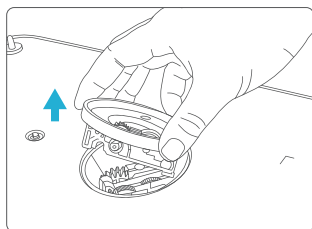
## 5. Maintenance

- Disassembly of the cutter module

Disassemble the cutter module of SMART-BIT as following steps.



Remove two screws in the cutter module by a (+) screwdriver as a picture.



Disassemble the cutter module to lift up as a picture.

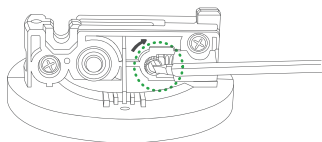


- Disconnect and unplug the power adapter before disassembling a cutter module. Otherwise, it may cause injury or damage.

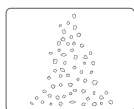


- The adjustment of the tension of cutter

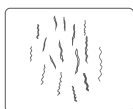
Please adjust a tension of cutter when the debris of ribbon is irregular in size or shredding operation is abnormal.



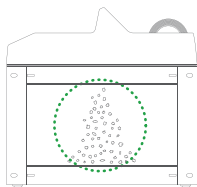
Turn a tension control screw clockwise by (-) screwdriver for increasing a tension of cutter.



Normal



Needs an adjustment

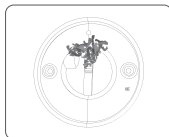


- Excessive tension of cutter can lead to critical failure.

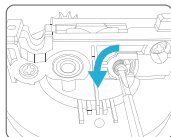
---

- Cleaning

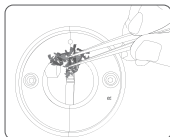
Disassemble the cutter of SMART-BIT.



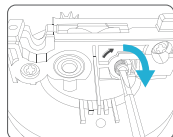
The debris is clotted in the cutter.



Turn a tension control screw counterclockwise by (-) screwdriver for decreasing a tension.



Remove debris with a tweezer.

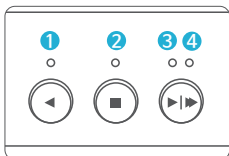


Turn a tension control screw clockwise by (-) screwdriver for recovering a tension.



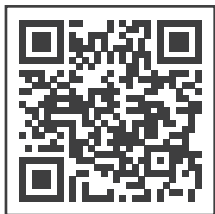
- Error status and countermeasures

The LED lamps on buttons display the status of error.  
The error types and countermeasures are as follows.



LED No.	Status	Description	Countermeasures	Remark
1	-	-	-	-
2	Blink	Completion of shredding / Error on sensor	Removal of ribbon / Push 'Shred' button	Warranty service is needed if it occurs frequently
3	Blink	Error on motor	Power On/Off	
4	Blink	Overload of motor	Power On/Off	

## 6. SMART-BIT Tutorial video



Scan a QR code to watch a tutorial video.

And the materials about SMART-BIT is also provided on the website.

# Specifications

Shredable Ribbon Type	Dye-Sublimation Ribbon, Resin & Wax Ribbon
Shredable Ribbon Width	60mm to 90mm (Installable Ribbon Core : Max. 120mm)
Installable Ribbon Diameter	Max. $\varnothing$ 80
Shredding Speed	Max. 16 meters/minute
Shredder Bin Capacity	6 Rolls (YMCKO, 250 cards/roll)
Cutting Type	Twisted Micro Cut *Patent
Shredded Particle Size	Approx. 2.5mm
Control	Speed (Slow, Normal and Fast mode), Stop, Reverse
Auto Stop	Finished Shredding, Ribbon Jam
Interface	4 LEDs, 3 Buttons
Power Consumption	DC 24V, 2A
Temp. / Humidity	15~35°C / 35~70%
Dimensions (WxHxL)	232 x 364.6 x 386 mm / 9.1 x 14.4 x 15.2 inch
Weight	Approx. 4.8 kg / 10.6 lbs

---

## Accessories



- Dust Bag x 5 (1 Pack)



- Large Waste Bin  
Frame x1  
Large Dust Bag 1 Pack



- Large Dust Bag (70 Liter)  
20 ea / 1 Pack