

**ID CARD CENTRE**  
WWW.IDCARDCENTRE.CO.UK

# Paperboard Cards

A truly sustainable and environmentally friendly solution for all your identity and access needs.

**PLASTIC<sup>®</sup>  
FREE**



# enviricard<sup>®</sup> Blank white paperboard card

3,370" (85.6mm)



2.125" (53.98mm)

## Material thickness

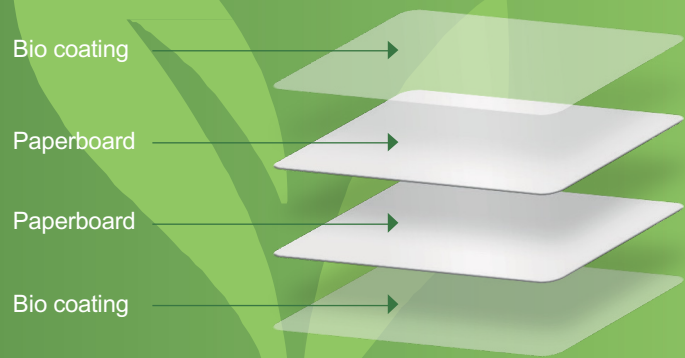
Front Bio coating	20 µm
Front Paperboard	395 µm
Back Paperboard	395 µm
Rear Bio coating	20 µm
<b>Total thickness</b>	<b>830 µm</b>

## Card characteristics

100% plastic free and FSC paperboard

1. Best in class and used by some of the world's biggest brands
2. Only card producer to be awarded the Plastic Free Trust Mark
3. Material sourced from FSC forest, where more trees are planted than harvested every year<sup>1</sup>
4. Paperboard is produced at our paper mill powered by biomass, no fossil fuels
5. Recyclable in normal household waste streams
6. Compostable in industrial landfill<sup>2</sup>
7. Available as plain white cards for in house personalisation
8. Available as full colour preprinted cards for in house personalisation
9. Smart cards with FSC paper inlays & ICs

## Card composition



## Paper characteristics

Physical properties	Value	Tolerances	Methods/remarks
Grammage (g/m <sup>2</sup> )	370-770	± 6%	ISO 536
Colour			
L* (%)	96.7	±0.8	ISO 5631-2
a*	2.3	±0.6	ISO 5631-2
b*	-7.9	±1.1	ISO 5631-2
Whiteness (%)	129	±5	ISO 11475
ISO brightness (%)	94	±2	ISO 2470
Surface roughness (µm)	0.9	≤ 1.4	ISO 8791-4
Board gloss 75° (%)	40	±10	ISO 8254-1

Physical properties	Value	Tolerances	Methods/remarks
Surface strength IGT (m/s)			
blister	0.7	≥ 0.5	ISO 3783
pick	1.3	≥ 0.8	ISO 3783
Ink absorption (%)	35	-	
Ply Bond (J/m <sup>2</sup> )	160	≥ 100	TAPPI 569
Wick test (kg/m <sup>2</sup> )	2.0	-	
Cobb (g/m <sup>2</sup> 60 s) (both sides)	30	≤ 40	ISO 535
Moisture content (%)	7.5	±1.0	ISO 287
Robinson taint	Below the detection limit of 0.6		EN 1230, DIN 10955

## Bio coating characteristics

Property	Method		Unit	Reference values	Range of variation
Nominal Thickness	-	-	µm	20	± 5% (*)
Unit Weight	internal	-	g/m <sup>2</sup>	24,8	± 7% (*)
Tensile Strength	ASTM D88 (**)	MD	N/mm <sup>2</sup>	105	≥ 70
Elongation at break	ASTM D88 (**)	MD	%	185	≥ 230
				85	≥ 120
					17-25
					30-40
Haze	ASTM D 1003	-	%	15	≤ 4,0 ≤ 6,0
Dynamic C.O.F.	ASTM D 1894	INT/INT	-	0,35	≤ 0,70
Seal Strength	85° C- 2,7 bar - 0.5 s	INT/INT	g/cm	230	≤ 180
MST	Internal	INT/INT	°C	55	≤ 95
Treatment level	ASTM D 2578	NT	mN/m	37	≤ 37
		TI/TO		43	≤ 40

## Compatibility

Printer name		Ink ribbon	Colour	Ink ribbon	Colour profile
Rio pro 360	yes	MA1000K	Yes (limited) <sup>3</sup>	MA300YMCKO	Absolute colorimetric
MagiCard 300	yes	MA1000K	Yes (limited) <sup>3</sup>	MC300YMCKO	Absolute colorimetric
MagiCard 600	yes	MA1000K	Yes (limited) <sup>3</sup>	MB300YMCKO	NONE
MagiCard K	yes	MA1000K	Yes	MK300YMCKO	NONE - HQ mode
Enduro	yes	MA1000K	Yes (limited) <sup>3</sup>	MC200YMCKO	Absolute colorimetric
Pronto 100	yes	MA1000K	Yes (limited) <sup>3</sup>	MD100YMCKO	Normal - HQ mode

All Resin/Mono tested for text at 6 pt

1 The Forest Stewardship Council is an international non-profit, multi-stakeholder organisation established in 1993 that promotes responsible management of the world's forests. 2 Certificate for awarding and use of 'ok compost' conformity mark. By VINCOTTE nv. 3 Not solid colour and no edge-to-edge printing

1

Avoid dark solid colours printed edge to edge. If you do try to run solid colours the ribbon may stick to the face of the card and tear.



2

Full bleed, full colour images without large solid areas of colour will print. You may hear the ribbon 'stretching' during the printing process.



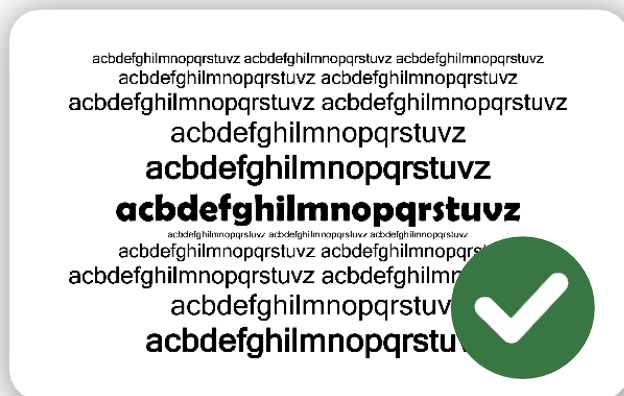
3

Perfect for ID cards with a mixture of black and white and colour images.



4

Black only overprint works with both Mono (resin) and four colour (YMCKO) ribbons.



# ID CARD CENTRE

WWW.IDCARDCENTRE.CO.UK

## About us

We are a leading UK supplier of identity and access control solutions since 1998. Over the years we have established and demonstrated that our technical knowledge is unrivalled in the industry.

We strive to continuously improve the experience and services that we offer to our customers. Which is why businesses and organisations across all sectors including government, healthcare, education, and events have trusted us for over 20 years.

As a business, we aspire to positively impact our planet. That's why a core value we incorporate into every aspect of our company is sustainability. From the tea bags we use to the solutions we offer; environmental sustainability plays a key part in all our decisions.



## ID Card Centre Ltd

Radiant House  
1A Studland Road  
Northampton  
NN2 6NE

01604 422422  
sales@idcardcentre.co.uk  
www.idcardcentre.co.uk



**PLASTIC<sup>®</sup>**  
**FREE**